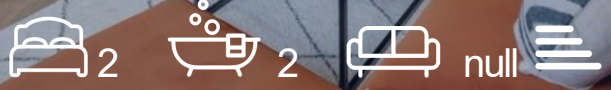
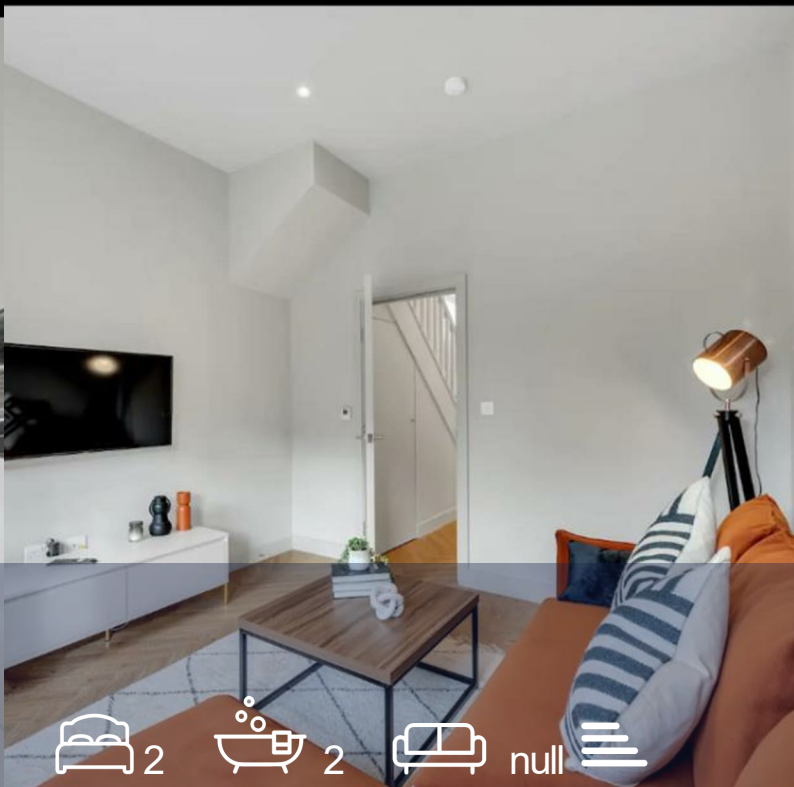




93a Minard Road

, London, SE6 1NN

£2,295 Per month



Floor Plan



Area Map

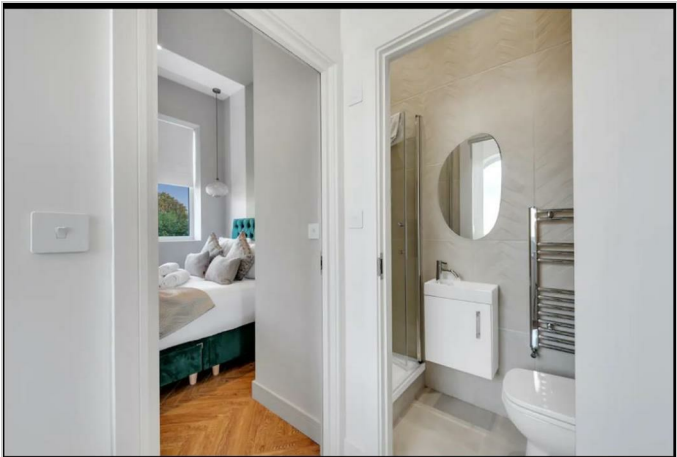


Energy Efficiency Graph



Viewing

Please contact our Sunshine Estates Office on 020 8066 5055 if you wish to arrange a viewing appointment for this property or require further information.



Sunshine Estates are delighted to introduce this stunning 2-bedroom house on the ground floor perfectly located in Lewisham. It has a separate kitchen/dining and is furnished, and a convenient distance to transport links and near local parks and shops.

- In the area:
- Stations nearby include: Lee, Catford Bridge, Bellingham and Grove park.
  - Lewisham Arthouse is a cultural hotspot and a testament to the area's thriving local art scene.
  - Manor House Gardens, Blackheath Common, and Hilly Fields provide plenty of greenery.
  - Greenwich Park and the Royal Observatory are a bonus.

Don't miss out on this gorgeous property! Contact us today to arrange a viewing.



These particulars, whilst believed to be accurate are set out as a general outline only for guidance and do not constitute any part of an offer or contract. Intending purchasers should not rely on them as statements of representation of fact, but must satisfy themselves by inspection or otherwise as to their accuracy. No person in this firms employment has the authority to make or give any representation or warranty in respect of the property.